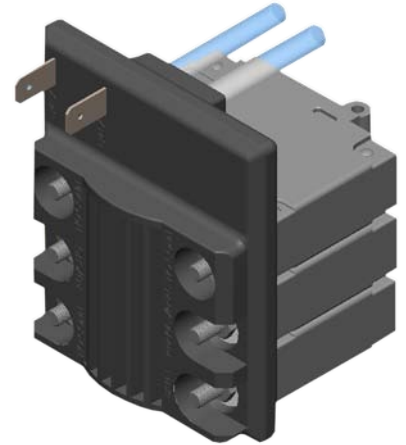


Electronic Intelligent Disconnect Module



Introduction

E-PLEX® enabled DC power disconnect allows for remote control operation through the E-PLEX® network. The 473EID combines traditional circuit breaker with an electronic switch and battery monitor. By integrating these components the user will be able to simplify his design and provide additional safety features to an application.

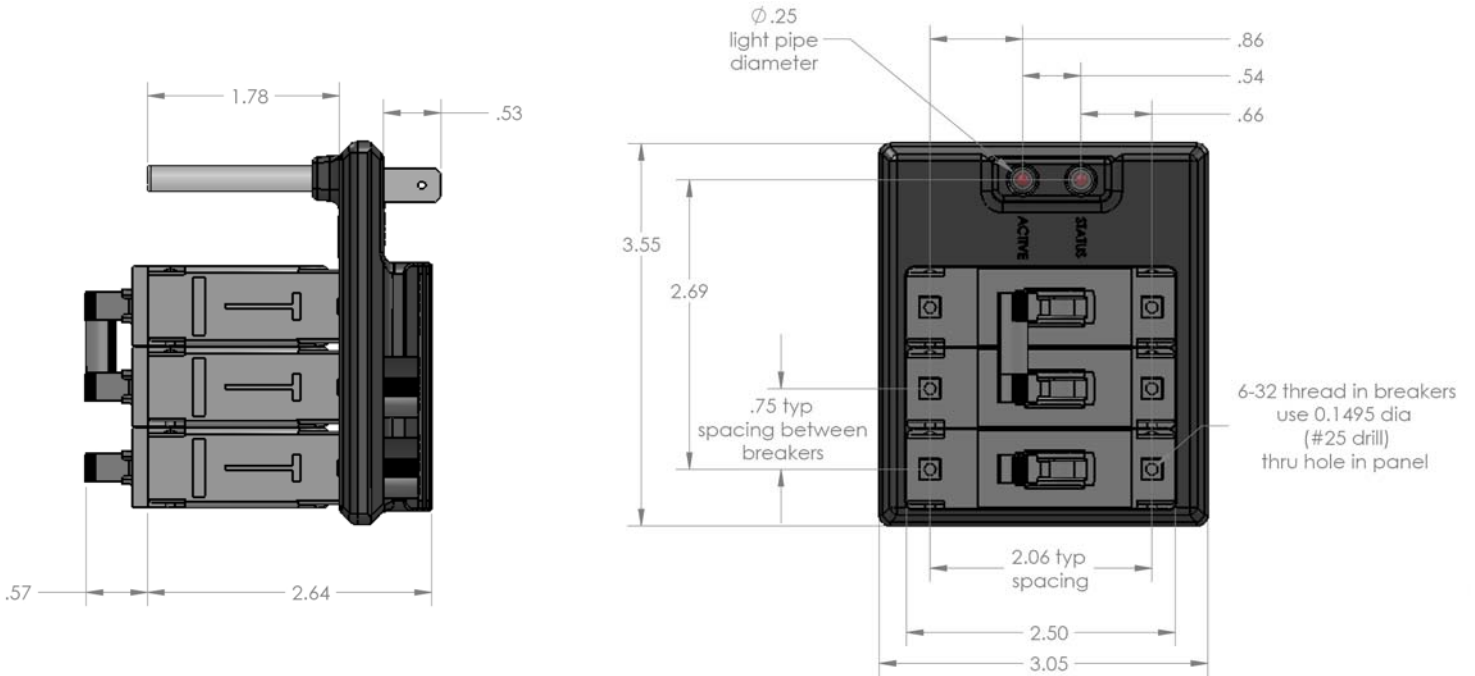
The EID can be programmed to automatically trip on an over current or voltage event due to a malfunctioning battery charger or alternator. It will also be able to detect when peak current or arc fault events occur.

Product is scheduled to be released 3Q2008.

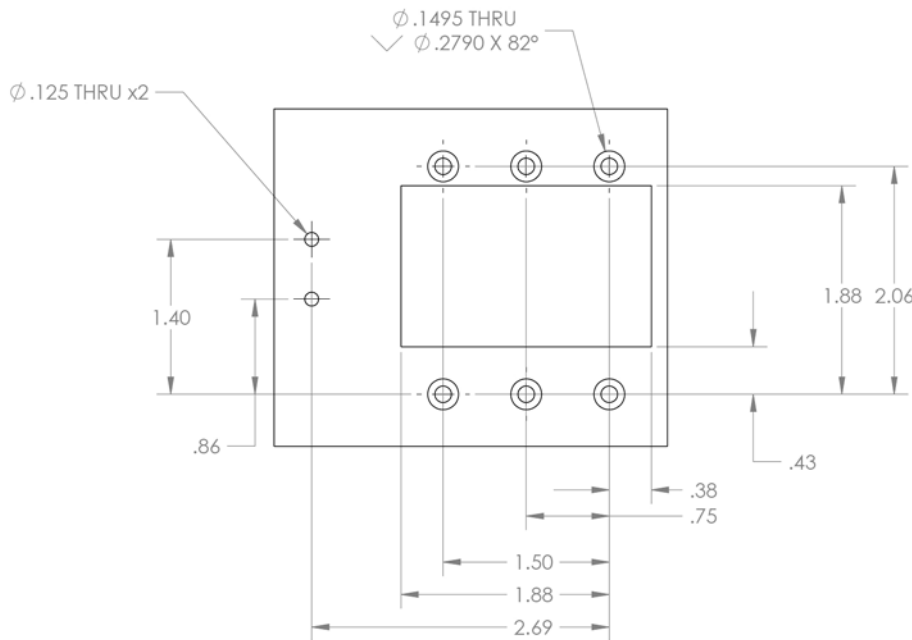
Key Features

- ◆ Operating electronic switch nominal voltage 9-32 VDC
- ◆ Electronic switch maximum surge voltage 45 VDC @ 400 Amps
- ◆ Circuit breaker open voltage 125 Volts
- ◆ Operating current nominal 20-75 Amps
- ◆ Current inrush 50-400 Amps programmable
- ◆ Current measurement accuracy ± 2 Amps
- ◆ Voltage measurement accuracy ± 0.1 Volts

Dimensional Specifications



Sample Panel Template



To ensure proper operation, module should be mounted to a panel no less than 0.090" thick using six 6-32 flat head screws. All cables connected to the back side of the module should be properly secured with adequate strain relief for the cable size being used. It is recommended that the within 12" of the connection to the module terminals that the cables be anchored to a secure structure.